



BADERBRÄU

2515 S. Wabash Ave. Chicago, IL 60616
Contact: info@venuelogicchicago.com | 312.300.4476



Baderbrau Brewing Company is opening a hip new space in Chicago! Their home is located in a corner building in the South Loop neighborhood and next door to the burgeoning Motor Row District. The identifying Baderbrau water tower can be seen in either direction on the Stevenson Expressway.

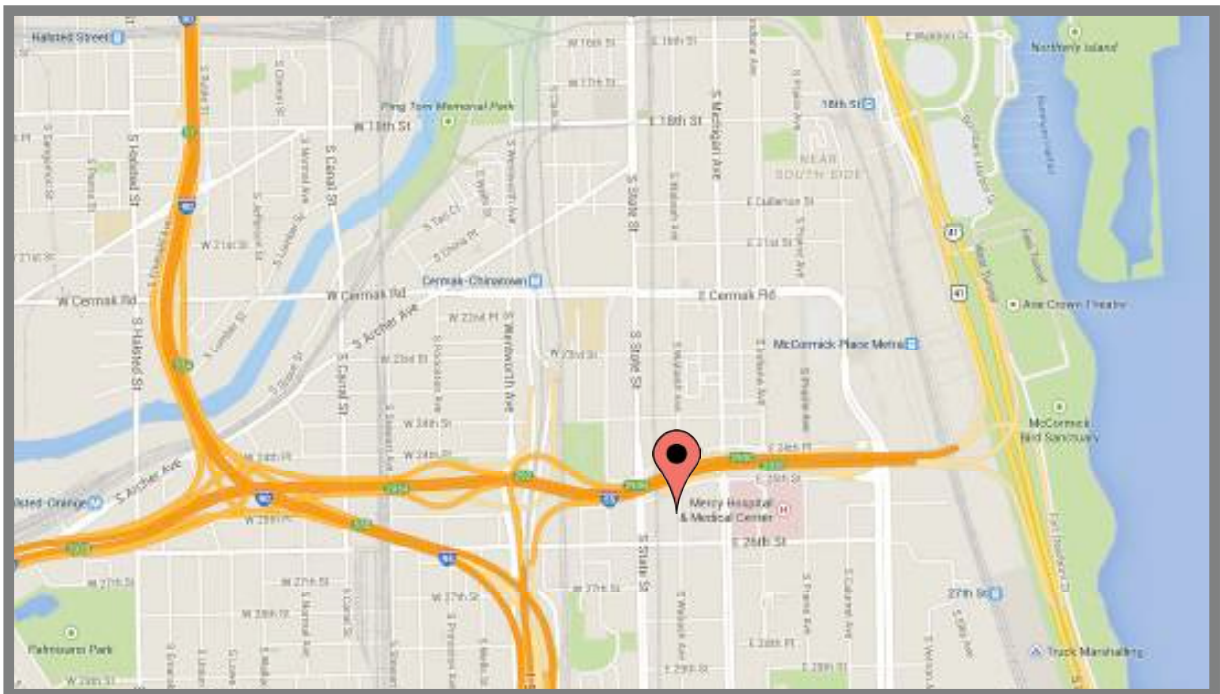
The facility will feature a taproom overlooking the brewing tanks and a state-of-the-art filter system, the first of it's kind to Chicago. On tap, will be the famed Baderbrau Pilsner, and their seasonal beers including Red Velvet, Lawnmower, Oktoberfest and Naked Selfie. Baderbrau will continue to target approachable lager recipes and wheat ales.

With a protracted skylight spanning the space and the timber and beam construction, the event space will be infused with natural lighting by day and city lights by night.

For additional Images please visit
<http://baderbrau.events/>

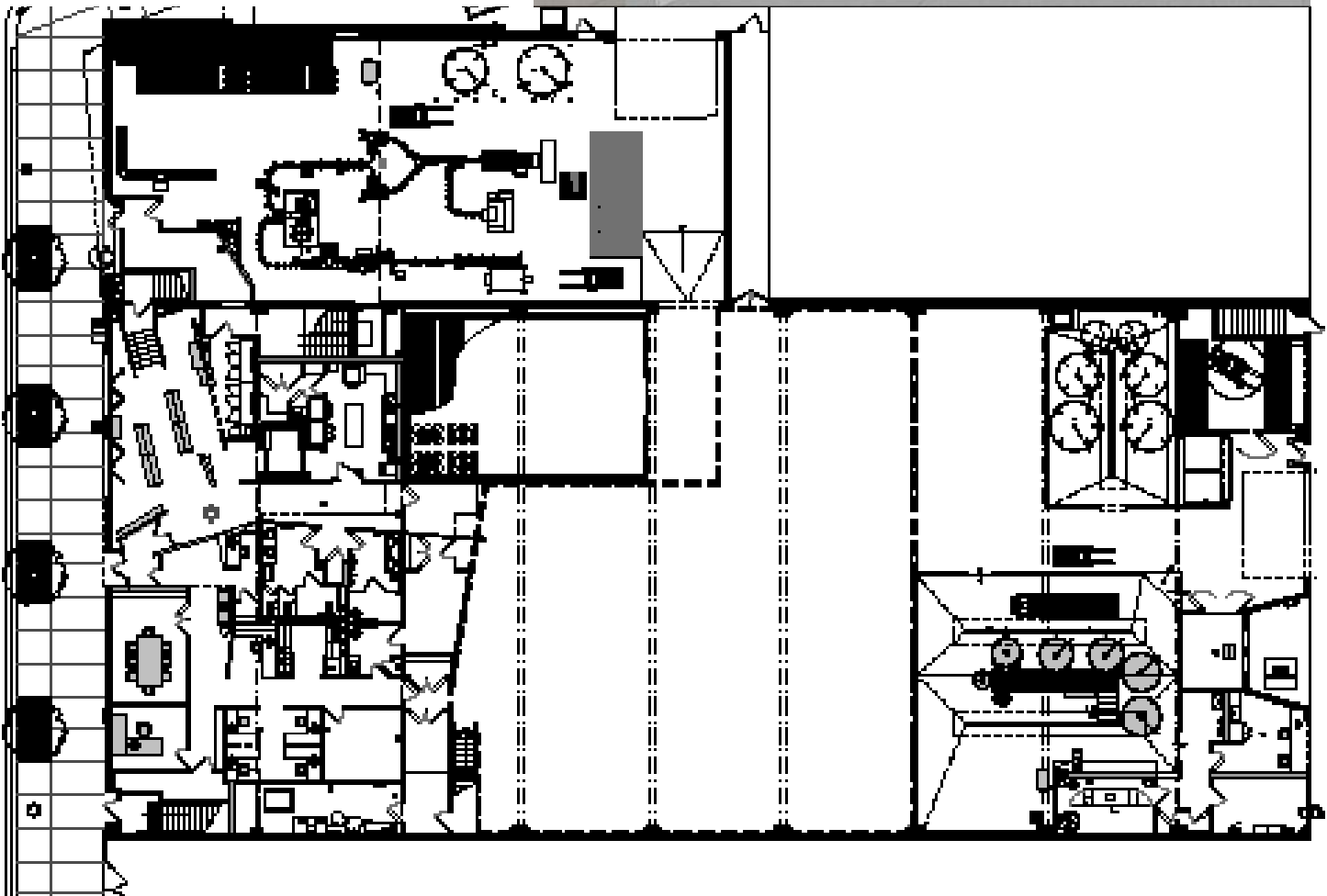
Location

2515 S. Wabash Ave. Chicago, IL 60616



For additional Images please visit
<http://baderbrau.events/>

Venue Layout



○ BADERBRAU EVENT SPACE - 1st Floor
SCALE: 1/8" = 1'-0"



For additional Images please visit
<http://baderbrau.events/>

Features & Amenities

- Exposed Brick
 - Skylight spanning the length of the space
 - Private party room on second (optional)
 - Wooden truss and beam architectural detailing
-



Capacities

Event Space: 8,000 sq. ft.

- Cocktail parties: Up to 800 guests
- Sit-down: Up to 350 guests



Rental Pricing For 12 hour rental

Sunday - Thursday.....	\$5,750
Friday.....	\$7,500
Saturday.....	\$8,500

Optional 2nd floor party room \$1,000
**Plus Food + Beverage*

NOT FOR PROFIT DISCOUNT 10%

New Year's Eve and Sundays before Labor Day and Memorial Day are the same rental price as Saturdays.

\$1500 deposit of bar contract and 50% deposit of venue contract due upon securing the date.

VenueLogic Libations

All beverages served at Baderbrau must be provided through our Beverage Program. Our in-house Beverage Program includes a wide variety of package options to match your needs and personality.



Facility Rental Includes:



- 250 Gun Metal chairs
- 25 8' x 36" rectangle tables
- Four 6' & four 8' rectangle tables
- Twelve 30" High Boy tables
- 2 custom metal bars
- Staff, event supervisor
- Event insurance

For more information, contact: 312.300.4476 | info@venuelogicchicago.com

Want to “green” your event?



SPECIAL



Venue Logic has partnered with an exciting special event service called “Special E”. This unique green business “rescues” items which are left over and discarded from special events, then repurposes them in ways that benefit our planet and people in need within the very same community where your programs take place!

The leftovers they rescue include food, flowers, candles, linens, decor, recyclables, and more. Following an event, they re-direct these items to family shelters, soup kitchens, hospitals, cancer centers, hospice facilities, nursing homes, assisted living facilities, military families, veteran’s organizations, schools and art programs for disabled and special needs children, disaster relief agencies, and a wide range of charitable and non-profit organizations.

The company charges a “Rescue Fee” to cover the cost of administering the rescue process and pay for the supplies and delivery charges they incur while providing this service. The rescue fee is \$995 for events up to 300 guests. The fee for larger-scale events varies based on the size and scope of the function being planned. They can also customize their service and rescue specific items if you prefer. The fee for this service is based on the size of your event and the type of items you would like them to rescue.

If this sounds of interest to you, simply give them a call or a shoot them an email! You can also learn more about this company and the unique service they provide by visiting their website.

What makes an event special? Some believe it’s the type of venue you select or the food you serve. Others say it’s the ambiance of the room or the theme you create. At Special E, they believe it’s what happens after your event that truly makes it special!

To “green” your event...

Call: 888.448.1930

Email: info@thespeciale.com

Visit: www.thespeciale.com