

# Power House



## about

Listed on the National Register of Historic Places, the Power House was built in 1905 as one of Sears, Roebuck and Co.'s four main buildings designed by George C. Nimmons. It powered the Sears complex until the company's move to the Sears Tower in downtown Chicago.

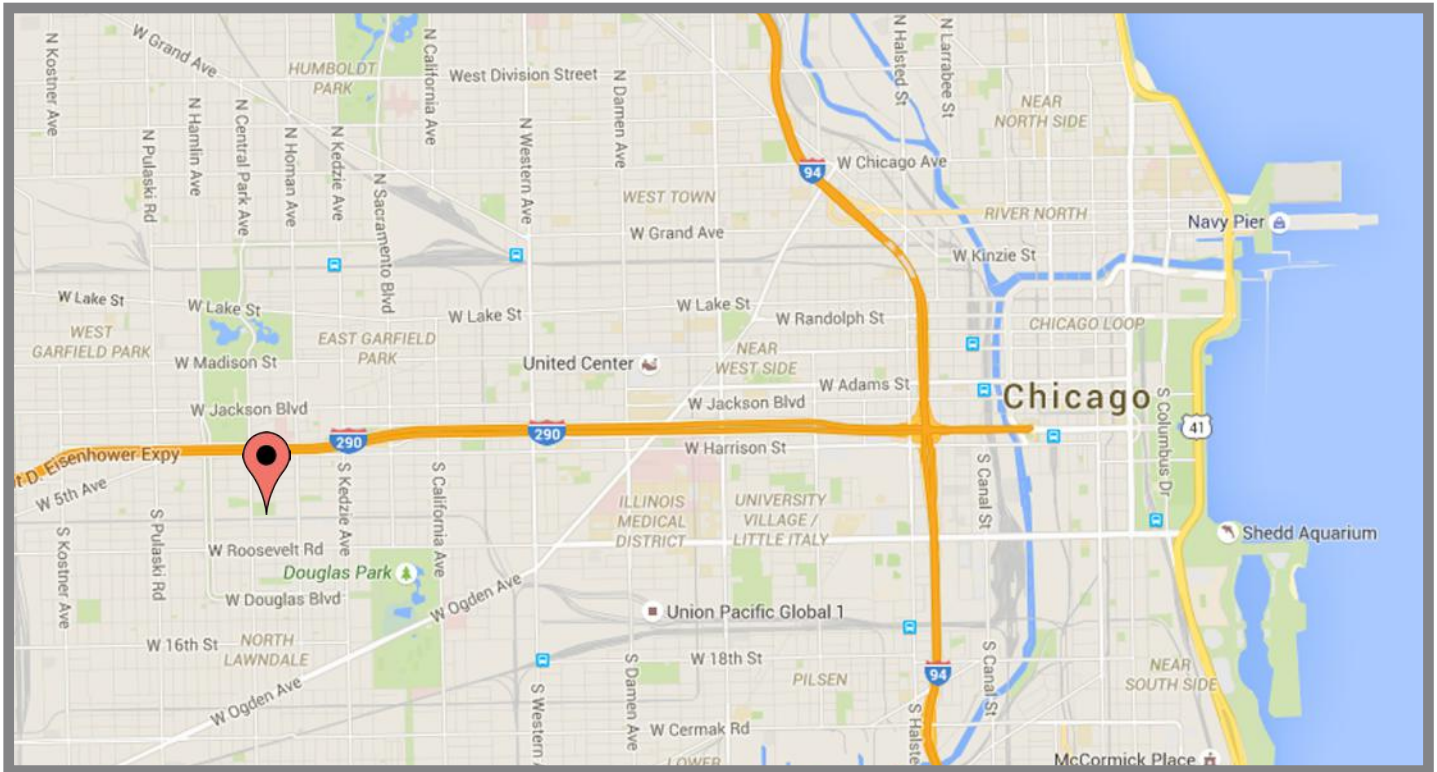
What began as a simple quest to determine the best use for an empty building, turned into a grand plan for reclaiming a treasured piece of Chicago's history by offering brighter futures to the community's youth.

The Charles H. Shaw Technology and Learning Center is home to DRW College Prep. A \$40 million restoration and historic preservation effort resulted in a LEED Platinum certified historic structure that now operates as a modern public charter high school.

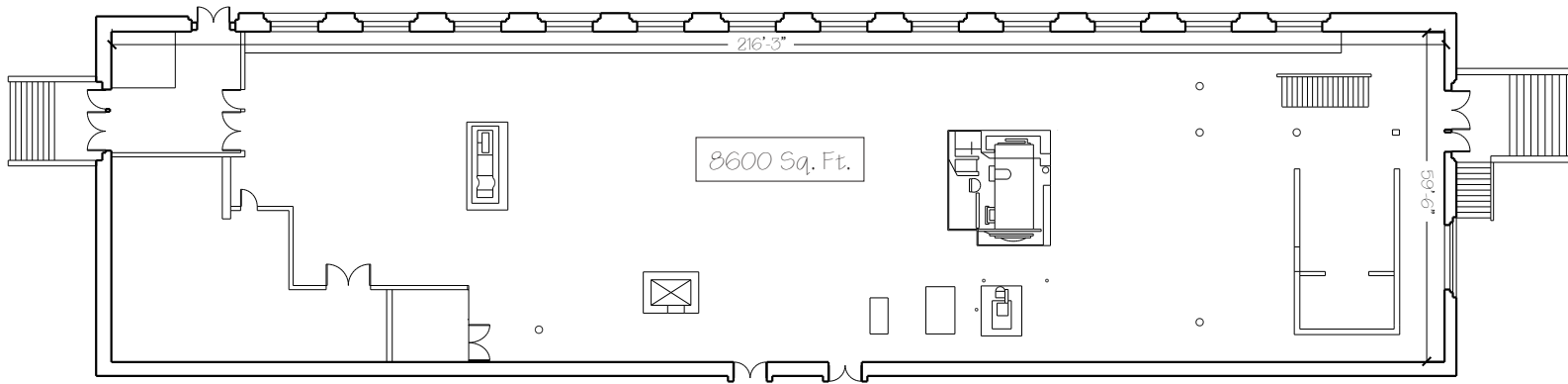
931 South Homan Avenue | Chicago, IL 60624  
Contact: [info@venuelogicchicago.com](mailto:info@venuelogicchicago.com) | 312.543.9020

# Location

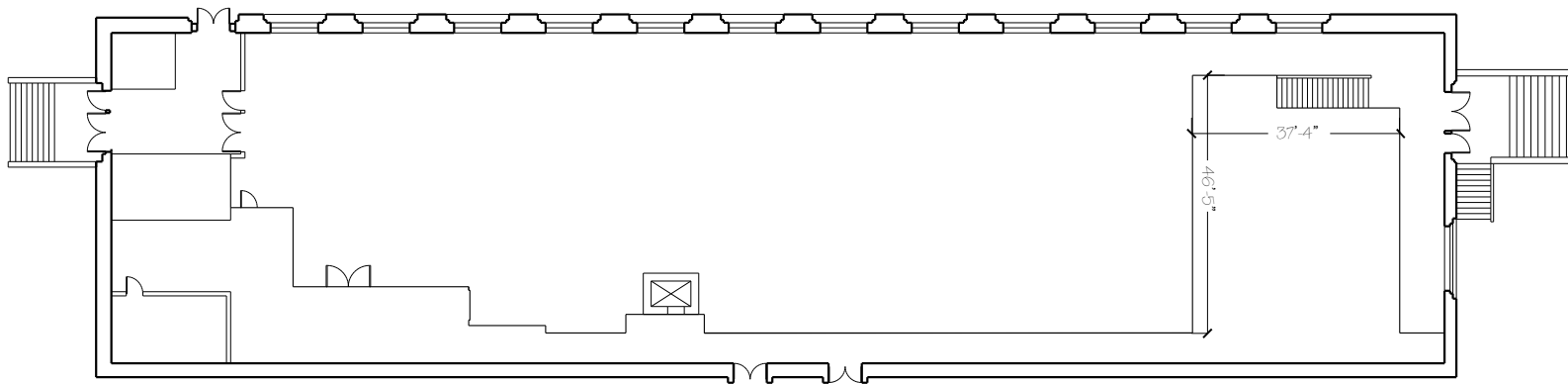
931 South Homan Avenue | Chicago, IL 60624



# Venue Layout



○ Power House Floor Plan - Lower Level



○ Power House Floor Plan - Upper Level



# Features & Amenities

- Designated catering kitchen
- Ample room for dance floor
- Twenty (20) 48" round tables
- Twelve (12) 8' banquet tables
- Twelve (12) 6' banquet tables
- 400 chairs

# Max Capacities

- Cocktail parties: 750
- Sit-down dinner: 500

# Square Footage

1st & 2nd Floor: 12,500 sq. ft.



# Rental Pricing *For 12 hour rental*

## 2015

Monday - Thursday .....	\$3,500
Friday & Sunday.....	\$4,500
Saturday.....	\$5,500

## 2016

Monday - Thursday .....	\$4,500
Friday & Sunday.....	\$5,500
Saturday.....	\$6,500

NOT FOR PROFIT DISCOUNT 10%

*New Year's Eve and Sundays before Labor Day and Memorial Day are the same rental price as Saturdays.*

*\$1500 deposit of bar contract and 50% deposit of venue contract due upon securing the date.*

## Libation Notes:

*All beverages served at Power House must be provided through our Beverage Program. Our in-house Beverage Program includes a wide variety of package options to match your needs and personality.*



For more information, contact:

**Jim Boardman** | (c) 312.543.9020 | [jboardman@venuelogicchicago.com](mailto:jboardman@venuelogicchicago.com)



# Nichols Tower

## SKYLOFT

List on the National Register of Historic Places, the Original Sears Tower, now known as the Nichols Tower, was built in 1905 as one of Sears, Roebuck and Co.'s four main buildings designed by George C. Nimmons.

## Amenities

- Designated Catering Kitchen
- 60" Round Tables / 100 Chivari Chairs
- Banquet Tables / Cocktail Rounds
- Capacity: Sit-down - 80; Cocktail 100

## Pricing

2015

---

Monday - Thursday .....	\$2,000
Friday & Sunday .....	\$2,500
Saturday .....	\$2,800



931 South Homan Avenue | Chicago, IL 60624

# Want to “green” your event?



SPECIAL



Venue Logic has partnered with an exciting special event service called “Special E”. This unique green business “rescues” items which are left over and discarded from special events, then repurposes them in ways that benefit our planet and people in need within the very same community where your programs take place!

The leftovers they rescue include food, flowers, candles, linens, decor, recyclables, and more. Following an event, they re-direct these items to family shelters, soup kitchens, hospitals, cancer centers, hospice facilities, nursing homes, assisted living facilities, military families, veteran’s organizations, schools and art programs for disabled and special needs children, disaster relief agencies, and a wide range of charitable and non-profit organizations.

The company charges a “Rescue Fee” to cover the cost of administering the rescue process and pay for the supplies and delivery charges they incur while providing this service. The rescue fee is \$995 for events up to 300 guests. The fee for larger-scale events varies based on the size and scope of the function being planned. They can also customize their service and rescue specific items if you prefer. The fee for this service is based on the size of your event and the type of items you would like them to rescue.

If this sounds of interest to you, simply give them a call or a shoot them an email! You can also learn more about this company and the unique service they provide by visiting their website.

What makes an event special? Some believe it’s the type of venue you select or the food you serve. Others say it’s the ambiance of the room or the theme you create. At Special E, they believe it’s what happens after your event that truly makes it special!

**To “green” your event...**

Call: 888.448.1930

Email: [info@thespeciale.com](mailto:info@thespeciale.com)

Visit: [www.thespeciale.com](http://www.thespeciale.com)